

CT6217CK COMPRESSOR

TECHNICAL SPECIFICATION



HUANGSHI DONPER ELECTRICAL APPLIANCE CO. , LTD.

2013. 5

INDEX

	page
1、 Compressor Type.....	2
2、 Performance Data.....	2
3、 Running Condition.....	2
4、 Compressor Mechanical Information.....	3
5、 Compressor Shape.....	3
6、 Wiring Diagram.....	4
7、 Fixing of mounting bracket and cabinet base.....	4
8、 Compressor nameplate identification.....	4
9、 Package、 Storage and Transportation.....	5
10、 Technical Items.....	5

1. Compressor Type

Compressor model	CT6217CK
Rated voltage/frequency	220V~50Hz
Refrigerant	R404A
Application	High back pressure (H. B. P)
Cooling method	Fan cooling (800m ³ /h)
Start torque	High starting torque (HST)
Control device	Capillary tube
Motor type	CSR

2. Performance Date

Displacement	Power	Net Wt.	Oil Charge	Cooling Capacity×95%								COP×95%		
				ASHRAE								CECOMAF	ASHRAE	CECOMAF
				-15	-10	-5	0	5	7.2	10	+5	7.2	+5	
cm ³	HP	kg	ml	w	w	w	w	w	w	w	w	w/w	w/w	
14.5	3/4	16.8	580	770	950	1250	1520	1840	1980	2180	1700	1.95	1.80	

Testing condition:

Test conditions	H.B.P	
	ASHRAE	CECOMAF
Evaporating Temp.	+7.2°C	+5°C
Ambient Temp.	+35.0°C	+32°C
Condensing Temp.	+54.4°C	+55°C
Suction Temp.	+35.0°C	+32°C
Subcooling Temp.	+46.1°C	+55°C

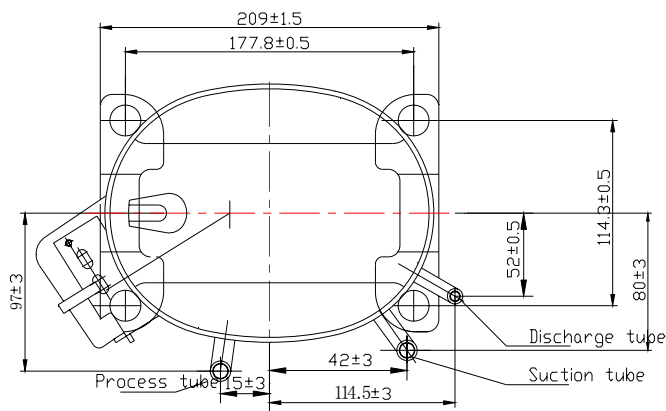
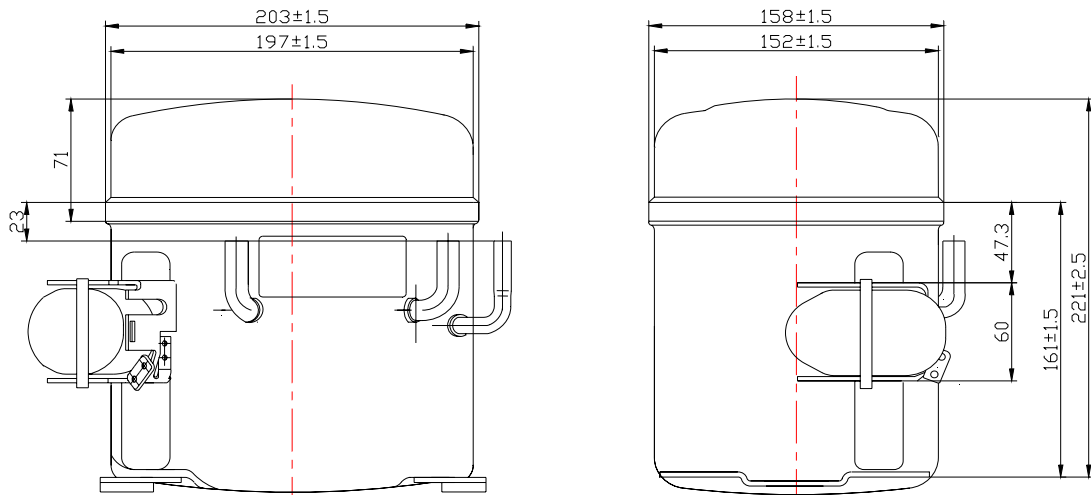
3. Running Condition

Ambient temp.	0~43°C
Evaporating temp.	-15~10°C
Voltage range	187~242V
Max. condensing temp.	65°C
Max. winding temp.	130°C
Max. shell temp.	95°C
Max. discharge temp.	130°C
Start voltage	187V [8/8bar(abs)]
Shell min. resistance to pressure	35bar

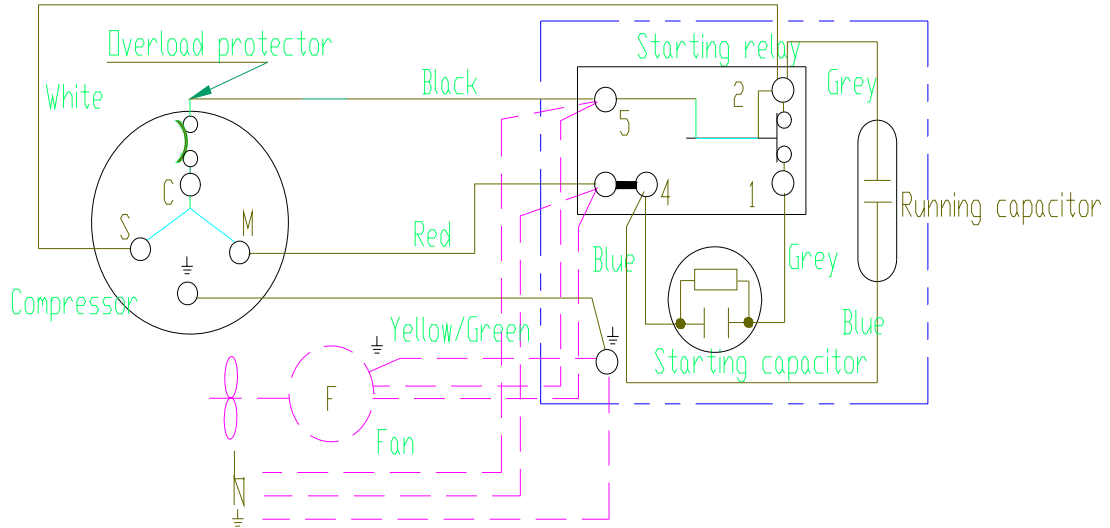
4. Compressor Mechanical Information

Oil type	RL46H
Viscosity	43~49 mm ² /s
Oil charged	580ml
Diameter of suction tube (I.D.)	Φ9.6±0.1mm
Diameter of discharge tube(I.D.)	Φ9.6±0.1mm
Diameter of process tube (I.D.)	Φ8.1±0.1mm
Material of suction tube, process tube and discharge tube	copper tube
Compressor noise	70dB (A)
Vibration	3.5m/s ²
Protecting gas	Dry com. air 0.8~1.1bar (Dew point-60℃)

5. Compressor Shape

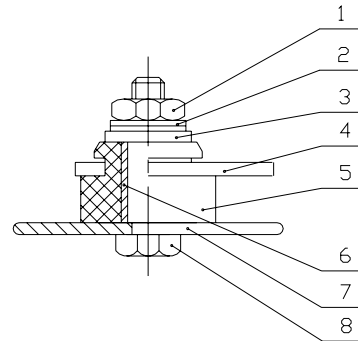


6. Wiring Diagram



7. Fixing Of Mounting Bracket And Cabinet Base

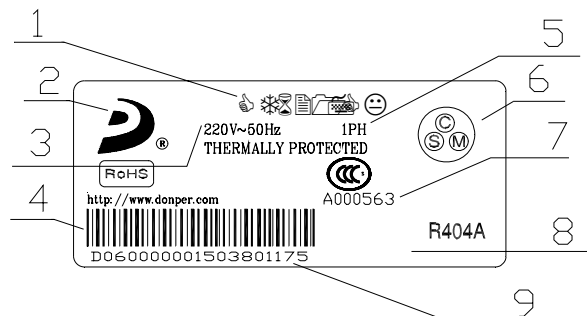
- 1、 Hexagon nut
- 2、 Spring washer
- 3、 Flat washer
- 4、 Compressor mounting bracket
- 5、 Rubber grommet
- 6、 Sleeve
- 7、 Cabinet base
- 8、 Screw



Note: Four grommets and four sleeves are all provided by our company.

8. Compressor Nameplate Identification

1. Compressor model
2. DONPER enrolled brand
3. Rated voltage and frequency
4. Compressor bar code
5. Single phase
6. Power supply connection mark
7. 3C Certificate serial number
8. Refrigerant
9. Product serial number



9. Package、Storage and Transportation

Package type	unreusable
Quantity	45pcs/box
Transportation	By truck or train
Storage	Max. 2 layers
Cross Weight Kg	806
Net Weight Kg	756
Volume m ³	0.8
Dimension: length×width×height (cm)	103×101×0.5
Main components	Wooden supporter、upper wooden cover、foam divider、plastic sheet、cardboard cover、rain-proof cover、wrapping
Movement	Keep the compressor in normal or vertical position (a short time before compressor installed in the refrigerator).
Trans. test requirement	No allowable compressor's damage and performance loss.

10. Technical Items

- (1)、Don't take off the rubber plugs before using and installing compressor to prevent dust and moisture.
- (2)、Don't turn down or incline the compressor during storage, transportation or installation and avoid vibration and shock.
- (3)、The compressor must be kept horizontally during running, the inclination angle must be less than 5° .
- (4)、A special polyester oil is charged in the R404A compressor and the charging volume has been optimized by DONPER. Don't pour out or add any refrigerant oil.
- (5)、The interval of compressor operation must be more than 4 minutes in order to obtain a pressure balance in the systems.
- (6)、Don't start or run in the case of vacuum or charge high voltage in the compressor. The compressor cannot be used to vacuumize the refrigeration system.
- (7)、The design of refrigeration system must be suitable to insure the oil could flow back to compressor.
- (8)、The maximum ambient temperature of the compressor operation is 43℃.When continuously operating under the maximum ambient temperature 43℃, the condensing pressure and the peak pressure should not exceed as showing in the following table.

Refrigerant	R404A
Max. condensing pressure	2.63MPa
Peak	3.0Mpa

- (9)、Widen the evaporating Temp. range of the compressor should be approved by DONPER.
- (10)、Compressor should be stored in a dry place.
- (11)、Compressor accessories (eg: starting relay etc.) are put in the accessories box instead of fixing on the compressor.
- (12)、The stocking period must be less than 6 months after the date of production. If longer, you have to check whether the filled gas is sufficient. Replenishment must be done if necessary.